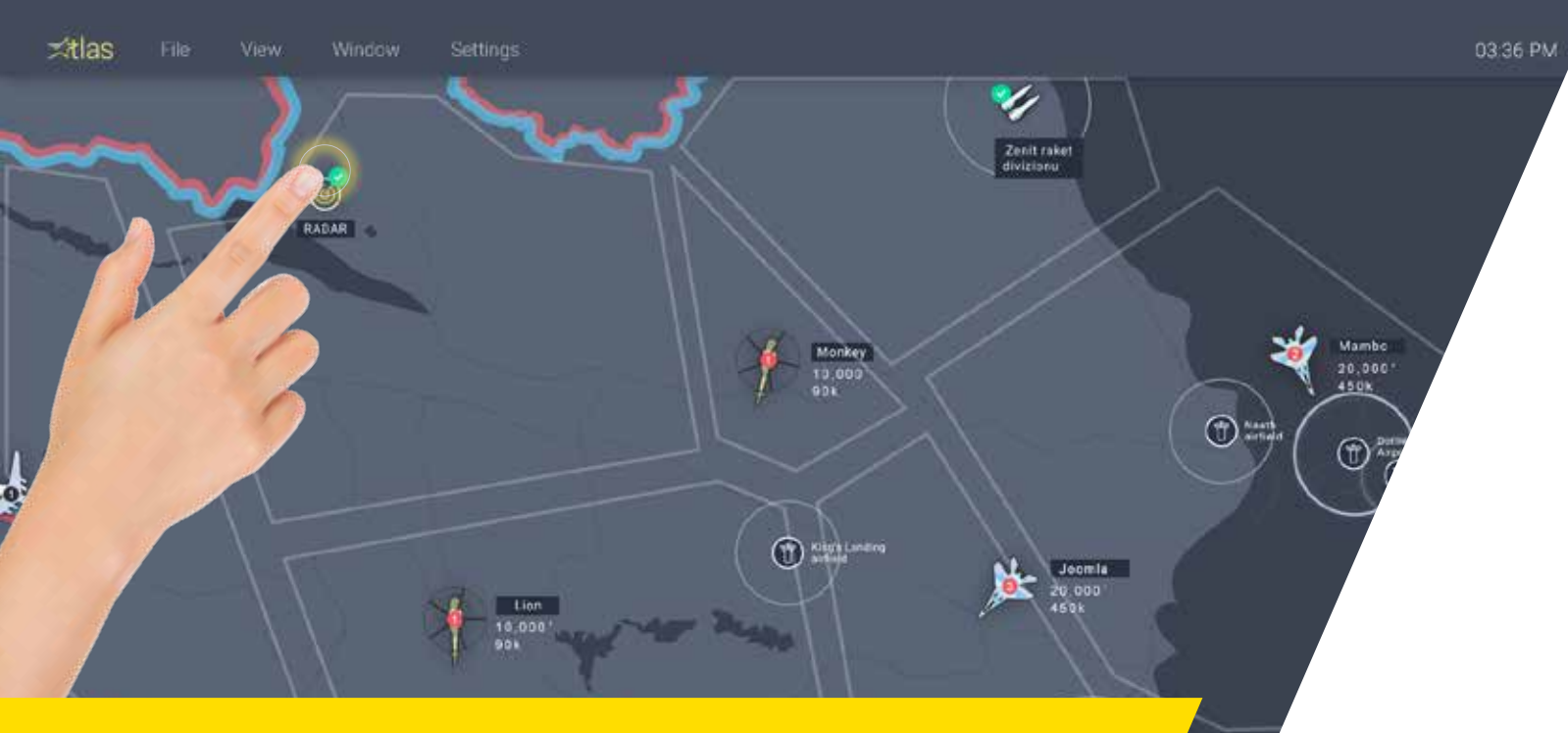


SKYTOUCH™

Aerial C⁴I Solutions





SKYTOUCH™

Aerial C⁴I Solutions

Touching the Sky, Defending the Battlespace

The biggest challenge countries face in managing their airspace and aerial forces, while keeping their sky free of threats, is in gathering and analyzing vast amounts of data and making it available to decision makers, as a practical tool, in real time.

Elbit Systems' SKYTOUCH is an end-to-end, multifunctional Planning, Command and Control solution that gathers and analyzes vast amounts of data from various sources, to create a complete and accurate aerial Common Operational Picture (COP).

By creating a comprehensive COP that can be distributed throughout a decentralized network, SKYTOUCH allows the entire chain of command to enforce strict aerial defense, increase threat-detection probability and enable optimal real-time operational response. SKYTOUCH supports high command by allowing it to manage all forces, in the air and on the ground, with the touch of a finger.

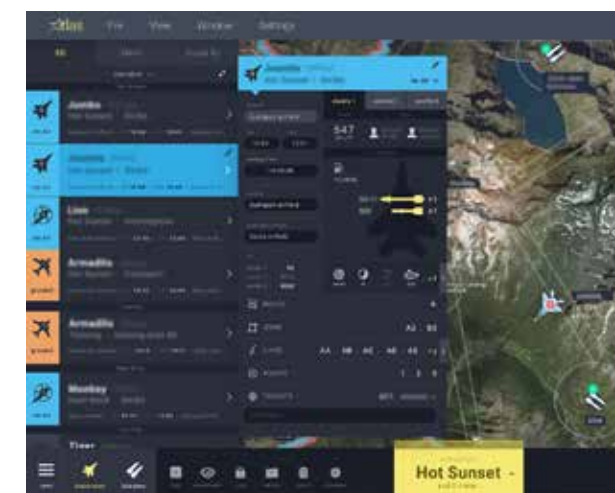
A robust solution, the SKYTOUCH network maintains its resilience through a smart cloud-based architecture, utilizing the latest technologies to achieve maximum network efficiency and redundancy.

Plan. Command. Control. Dominate!

Plan

An operational planning solution for all airborne missions, SKYTOUCH Plan provides a complete aerial picture, including tasks and missions, aircraft types, routes, payloads, munitions and more.

Enabling simple, consolidated flight-schedule planning for all training and operational requirements, SKYTOUCH Plan provides real-time monitoring of planned flights, in-flight aircraft, weather, news and intelligence data. SKYTOUCH Plan's open architecture enables quick and easy customization, according to customers' operational requirements and flight doctrines.



Control

Providing ground control with the widest, most accurate operational picture, SKYTOUCH Control is a military Air Traffic Control and Ground Control Interception automation system that supports all ground control tasks and ensures true airspace management.

SKYTOUCH Control enables aerial defense management and security through: (ATC), (GCI); integration of aerial picture with other air, sea and ground C4I systems; Search and Rescue (SAR) missions; training and simulation and more.



Command

An advanced multi-touch system with a table-like interface, which unifies and displays all data, readiness status and other data sources atop 3D maps, SKYTOUCH Command provides complete operational command capabilities, in real time.

Supporting a Network Centric Warfare (NCW) approach, SKYTOUCH Command allows high command to mark routes, view, identify and classify targets, allocate missions, perform real-time interception planning, measure distances and more.



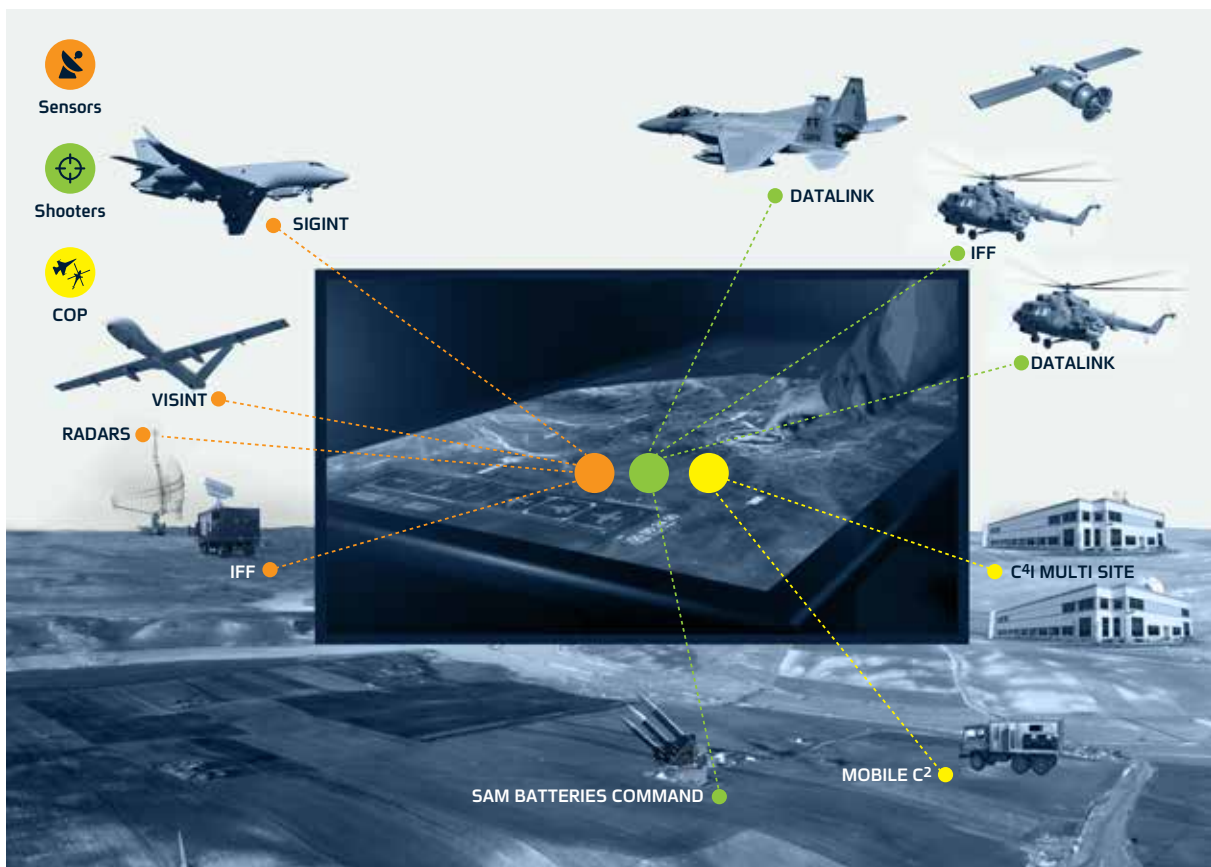
SKYTOUCH™

Aerial C⁴I Solutions

The SKYTOUCH Advantage:

- Most advanced intuitive user experience
- Complete, end-to-end product suite, including all required sub-systems and capabilities
- Easy to customize according to specific requirements
- Turnkey solution, based on vast experience in delivering end-to-end packages
- Scalable offering, from local C² to full scale C⁴I suite deployment

Sensor to Shooter



Elbit Systems Ltd.

Advanced Technology Center, P.O.B. 539, Haifa 3100401, Israel
E-mail: aerospace@elbitsystems.com www.elbitsystems.com

Follow us on [t](#) [YouTube](#) [f](#)