

LONG VIEW 10

Ruggedized Super Long Range Thermal Imaging Observation System with Continuous Optical Zoom



Main Advantages & Features

- State of the art TI Technology
- Outstanding Super Long-range performance
- IR continuous optical zoom
- High-end digital detector
- A lightweight package - ruggedized for harsh environment
- Simple operation from any remote console via standard communication

Applications

The LONG VIEW 10 Thermal Imager is intended especially for remote operation applications in harsh environments such as:

- High-end Observation towers and vehicles
- Surveillance systems
- Mobile / Stationary weapon turrets
- Air defense systems

LONG VIEW 10

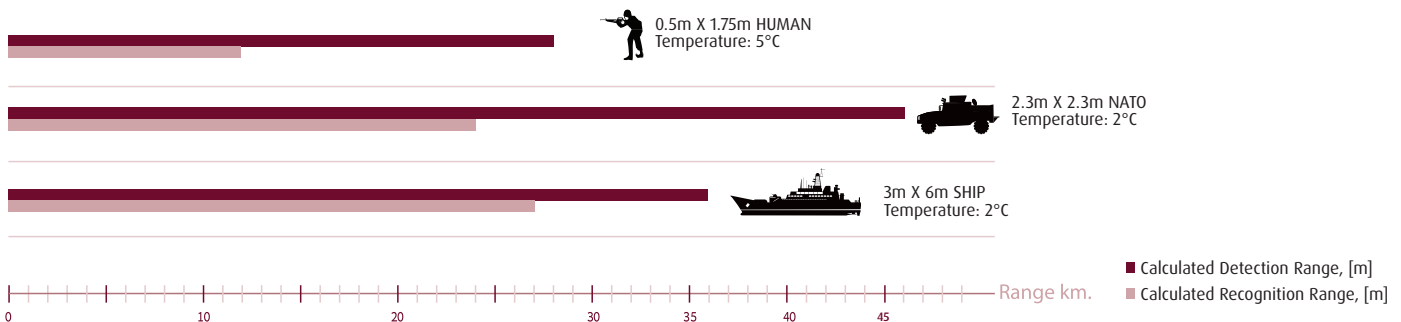
Ruggedized Super Long Range Thermal Imaging Observation System with Continuous Optical Zoom

Technical Data

Spectral band	MWIR
Optical zoom	> X16, continuous
NFOV	< 0.43°x 0.34° (CCIR)
WFOV	>6.9 x 5.5 (CCIR)
Nominal Focal length	1375mm (NFOV)
Aperture	10"
Detector type	InSb FPA
No. of elements	640 x 512
Cooler	Stirling closed cycle
Dimensions	850mm(L) x 360 mm(W) x 350mm(H)
Weight	< 16kg
Video signal	PAL
Communication	RS422 or Ethernet
Environmental conditions	IAW MIL-STD-810F
Operating temperatures	-32°C to +55°C
Supply voltage	28 Vdc nominal IAW MIL-STD-1275AT
Input power	< 50 W @ steady state



Range Performance



Elbit Systems Ltd.

E-mail: istar@elbitsystems.com www.elbitsystems.com

Follow us on   